



**QATAR STEEL**  
INDUSTRIES FACTORY (W.L.L.)  
مصنع قطر للصناعات الحديدية

# QATAR HR MILD STEEL SHEET

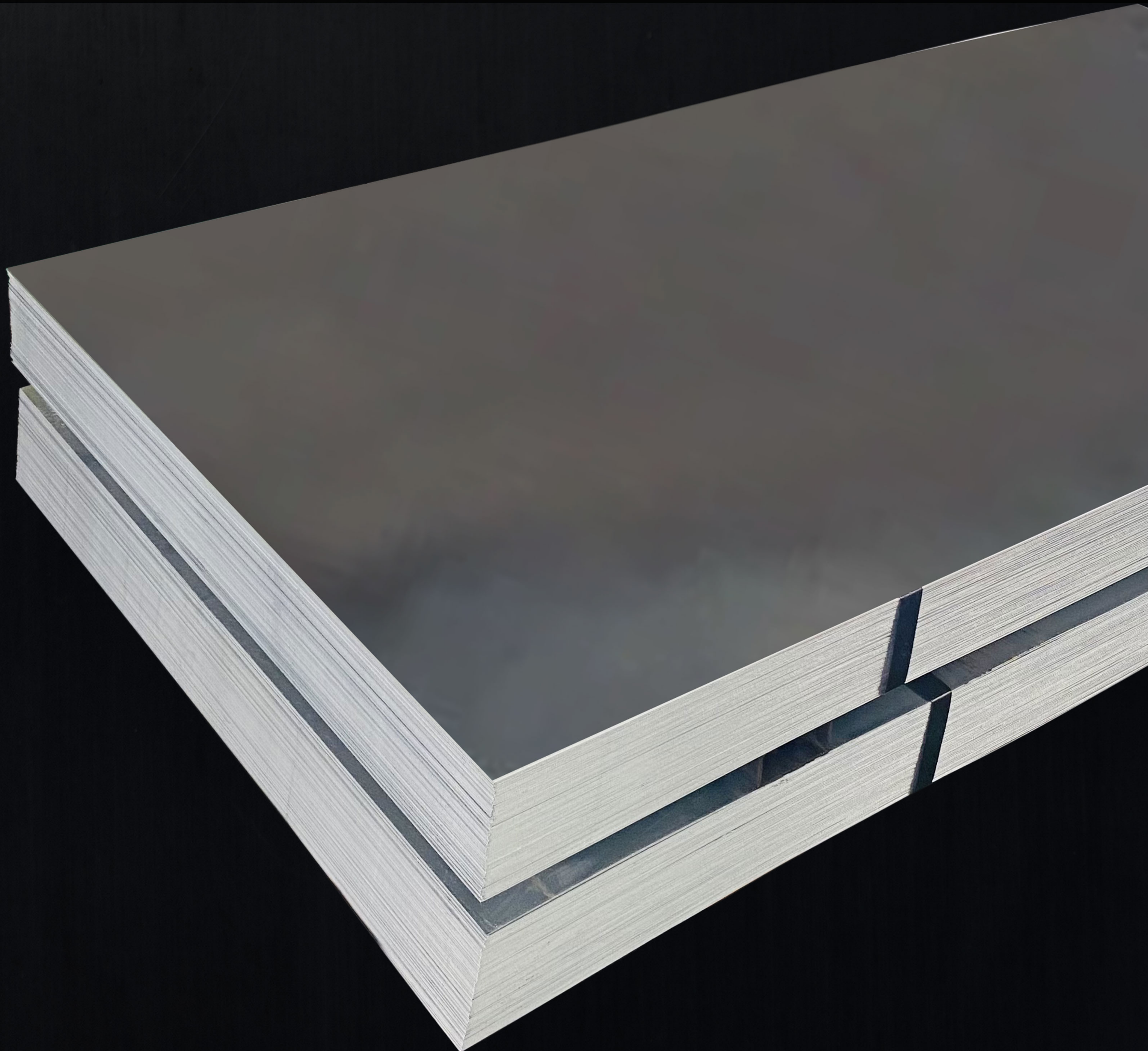
Qatar Steel Industries Factory specializes in manufacturing hot rolled mild steel sheets, which are used in structures, decorations, furniture, fencing, wires, automobiles and nails.

Mild steel is known for its low carbon content, due to which it is known as low carbon steel as well. The amount of carbon in mild steel varies from 0.05% to 0.25% by weight. Mild steel is not an alloy and therefore does not contain other elements apart from iron. Since it is majorly carbon and the alloying elements are relatively low, there are several properties that it possesses which differentiate it from higher carbon and alloy steels.

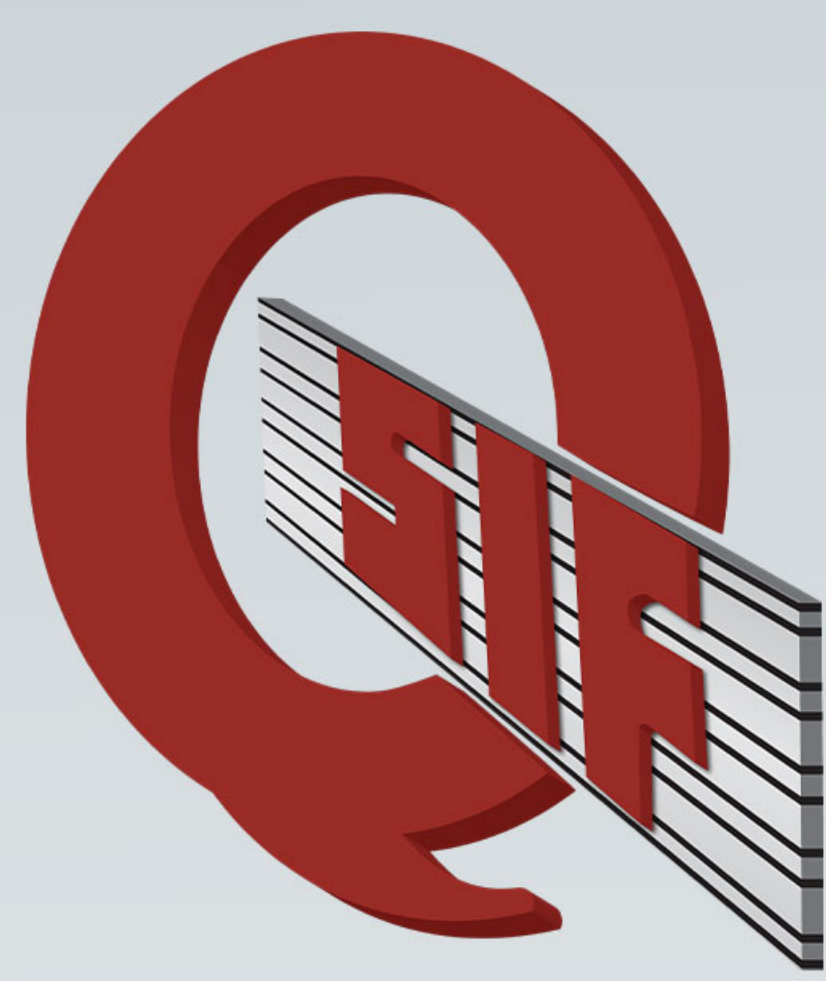
Hot rolling is a process where a material is heated and processed above the recrystallization temperature. Initially, the material is usually large pieces of metal, which is fed directly into the rolling mills at a pre-defined temperature. The metal is worked, and the temperature is kept above the recrystallization state. Hot-rolled metals in their mechanical properties and deformed states have little directionality.

**Qatar Steel Industries Factory Hot Rolled Mild Steel or MS Sheets have the following size and thickness:**

- Thickness options ranging from 0.35mm - 16 mm.
- Standard-length of 1220 mm and 2440 mm.







# MILD STEEL SHEET

## TECHNICAL DATA SHEET

**QATAR STEEL**

INDUSTRIES FACTORY (W.L.L)

مصنع قطر للصناعات الحديدية

### HR MILD STEEL SHEET (4' X 8')

S. NO.	SIZE (Width x Length x Thickness)
1	1220 x 2440 x 0.35 mm
3	1220 x 2440 x 0.50 mm
5	1220 x 2440 x 0.70 mm
7	1220 x 2440 x 1.00 mm
9	1220 x 2440 x 1.40 mm
11	1220 x 2440 x 1.80 mm
13	1220 x 2440 x 2.70 mm
15	1220 x 2440 x 3.00 mm
17	1220 x 2440 x 3.80 mm
19	1220 x 2440 x 4.70 mm
21	1220 x 2440 x 5.00 mm
23	1220 x 2440 x 5.80 mm
25	1220 x 2440 x 6.70 mm
27	1220 x 2440 x 7.80 mm
29	1220 x 2440 x 9.70 mm
31	1220 x 2440 x 10.00 mm
33	1220 x 2440 x 11.80 mm
35	1220 x 2440 x 13.80 mm
37	1220 x 2440 x 16.00 mm

S. NO.	SIZE (Width x Length x Thickness)
2	1220 x 2440 x 0.40 mm
4	1220 x 2440 x 0.60 mm
6	1220 x 2440 x 0.90 mm
8	1220 x 2440 x 1.20 mm
10	1220 x 2440 x 1.50 mm
12	1220 x 2440 x 2.00 mm
14	1220 x 2440 x 2.80 mm
16	1220 x 2440 x 3.70 mm
18	1220 x 2440 x 4.00 mm
20	1220 x 2440 x 4.80 mm
22	1220 x 2440 x 5.70 mm
24	1220 x 2440 x 6.00 mm
26	1220 x 2440 x 6.80 mm
28	1220 x 2440 x 8.00 mm
30	1220 x 2440 x 9.80 mm
32	1220 x 2440 x 11.70 mm
34	1220 x 2440 x 12.00 mm
36	1220 x 2440 x 15.80 mm

### APPLICATION

Construction Finish, Fabrication, Roofing Tile Panel, Profiles, Machinery, Automobile Industry and many others.